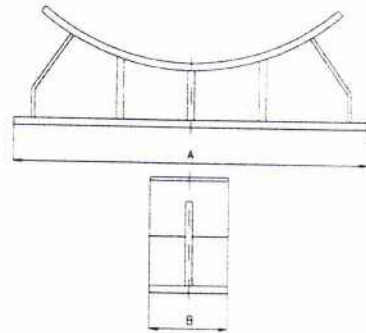
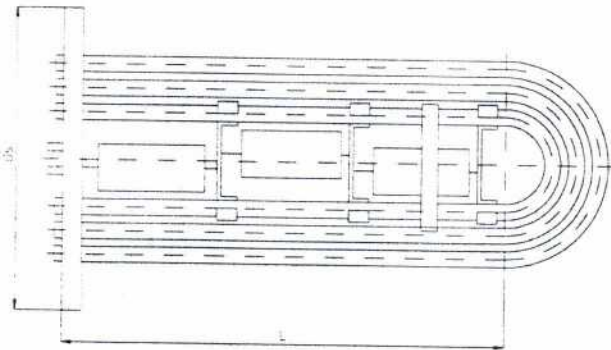


Podstawowe wymiary wymienników pojemnościowych WP-6

| Lp. | Nr węz | Pojemność dm ³ | Pow. ogrzew. węzownicy m ² | Wymiary mm | | | Wydajność cieplna kcal/h | |
|-----|--------|------------------------------|---|----------------|------|----------------|-----------------------------|-------------------|
| | | | | D _z | L | L _c | para 0.6 MPA | woda 150/70 °C |
| 1 | 1 | 250 | 0.5 | 612 | 500 | 1275 | 54100 | 14000 |
| | 2 | | 0.7 | | | | 75700 | 18000 |
| 2 | 1 | 400 | 0.8 | 612 | 1150 | 1925 | 86500 | 27000 |
| | 2 | | 1.2 | | | | 129700 | 41000 |
| 3 | 1 | 630 | 1.3 | 716 | 1400 | 2230 | 129700 | 41000 |
| | 2 | | 2.2 | | | | 235700 | 75000 |
| 4 | 1 | 1000 | 1.8 | 916 | 1220 | 2334 | 194600 | 63000 |
| | 2 | | 2.7 | | | | 291900 | 95000 |
| 5 | 1 | 1250 | 2.2 | 916 | 1650 | 2764 | 237800 | 82000 |
| | 2 | | 3.3 | | | | 356900 | 122000 |
| 6 | 1 | 1600 | 4.6 | 1016 | 1500 | 2644 | 281100 | 95000 |
| | 2 | | 4.7 | | | | 508100 | 172000 |
| 7 | 1 | 2000 | 3.4 | 1220 | 1300 | 2628 | 363200 | 121000 |
| | 2 | | 5.7 | | | | 621600 | 206000 |
| 8 | 1 | 2500 | 4.3 | 1220 | 1750 | 3108 | 464900 | 164000 |
| | 2 | | 7.1 | | | | 767600 | 271000 |
| 9 | 1 | 3250 | 5.5 | 1220 | 2400 | 3758 | 594600 | 220000 |
| | 2 | | 9.0 | | | | 973000 | 360000 |
| 10 | 1 | 4000 | 7.2 | 1220 | 2900 | 4258 | 778400 | 295000 |
| | 2 | | 11.3 | | | | 1210800 | 459000 |

Wężownica i konstrukcja stalowa pod wymiennik WP-6



| Poj. wym. dm ³ | Nr węz. | Wymiary mm | | | | Il. rur w rzędz. mm | | |
|------------------------------|---------|----------------|------|-----|----|------------------------|----|-----|
| | | D _s | L | A | B | I | II | III |
| 250 | 1 | 318 | 929 | 520 | 50 | 4 | — | — |
| | 2 | | 869 | | | 4 | 2 | — |
| 400 | 1 | 318 | 1519 | 600 | 50 | 4 | — | — |
| | 2 | | 1509 | | | 4 | 2 | — |
| 630 | 1 | 318 | 1639 | 600 | 50 | 4 | 2 | — |
| | 2 | | 1819 | | | 5 | 4 | — |
| 1000 | 1 | 440 | 1729 | 800 | 60 | 8 | — | — |
| | 2 | | 1729 | | | 8 | 4 | — |
| 1250 | 1 | 440 | 2129 | 800 | 60 | 8 | — | — |
| | 2 | | 2129 | | | 10 | 2 | — |

| Poj. wym. dm ³ | Nr węz. | Wymiary mm | | | | Il. rur w rzędz. mm | | |
|------------------------------|---------|----------------|------|------|-----|------------------------|----|-----|
| | | D _s | L | A | B | I | II | III |
| 1600 | 1 | 440 | 2004 | 900 | 60 | 10 | — | — |
| | 2 | | | | | 10 | 8 | — |
| 2000 | 1 | 440 | 1979 | 900 | 60 | 10 | 2 | — |
| | 2 | | | | | 10 | 8 | 4 |
| 2500 | 1 | 440 | 2379 | 1000 | 100 | 10 | 4 | — |
| | 2 | | | | | 10 | 7 | 6 |
| 3250 | 1 | 440 | 3029 | 1000 | 100 | 10 | 4 | — |
| | 2 | | | | | 10 | 9 | 4 |
| 4000 | 1 | 440 | 3429 | 1000 | 100 | 10 | 6 | — |
| | 2 | | | | | 10 | 9 | 6 |

HYDROKOMPLET
Grzegorz Dreszler, Andrzej Molczyński
 Spółka Cywilna
 86-300 Grudziądz, ul. Legionów 65/67
 NIP 876-245-51-40 Regon 341071289
 Nr konta 84 1020 5040 0000 6802 0134 1031
 Tel. 56 46 18 699. Fax 56 654 70 52